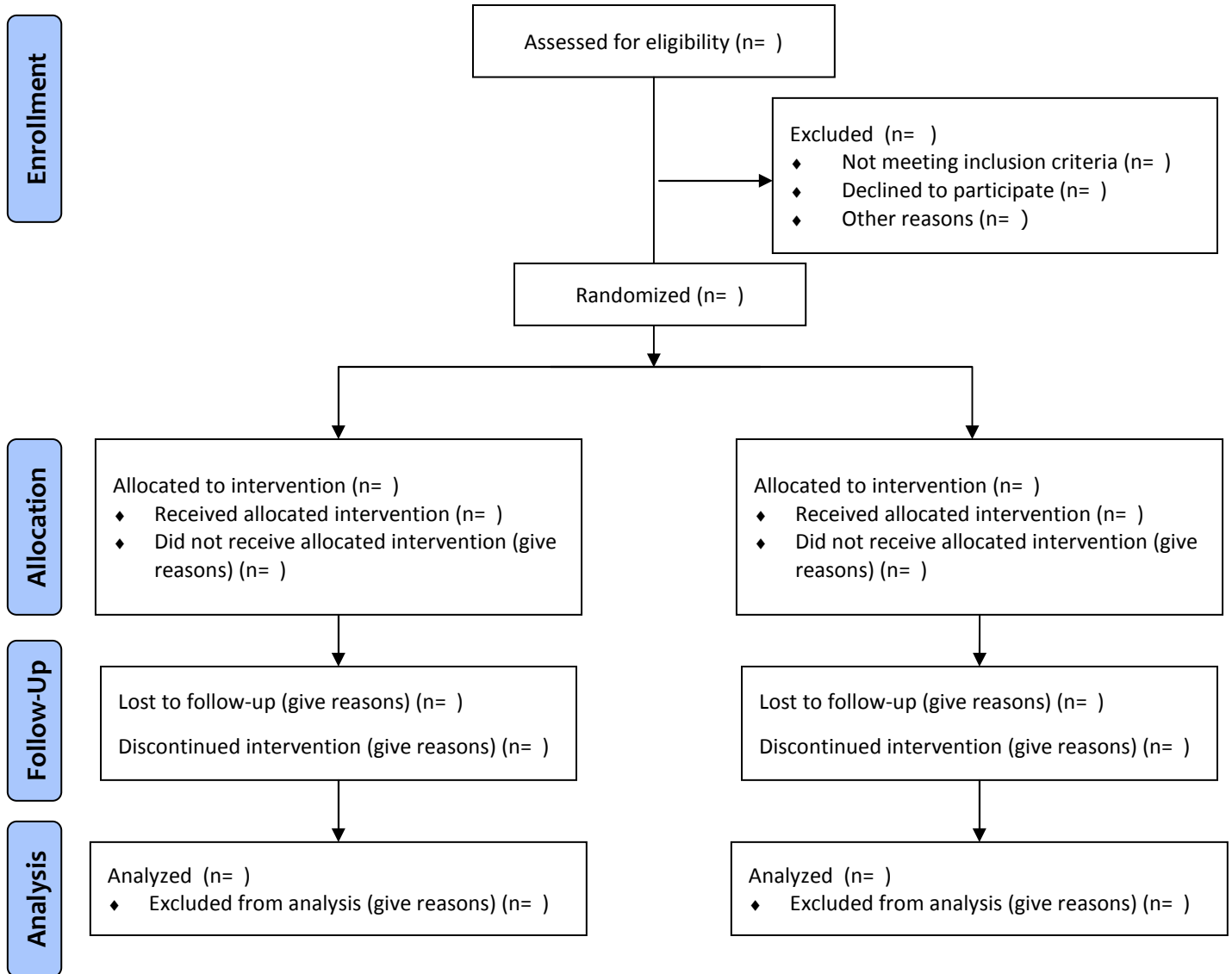




# CONSORT Statement 2010 Flow Diagram



From Schulz KF, Altman DG, Moher D, for the CONSORT Group. CONSORT 2010 Statement: updated guidelines for reporting parallel group randomised trials. *BMJ* 2010;340:c332.

For more information, visit [www.consort-statement.org](http://www.consort-statement.org).